

Simplified, Smart Control

New AlorAir-R APP WI-FI Connection Guide

Connecting the AlorAir-R app to the dehumidifier is the same for iOS and Android users.

—ALORAIR—

NEW

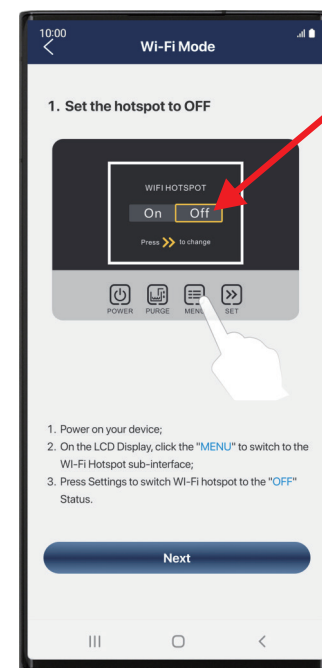
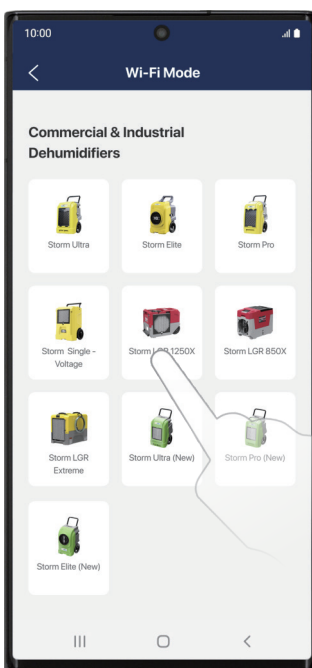
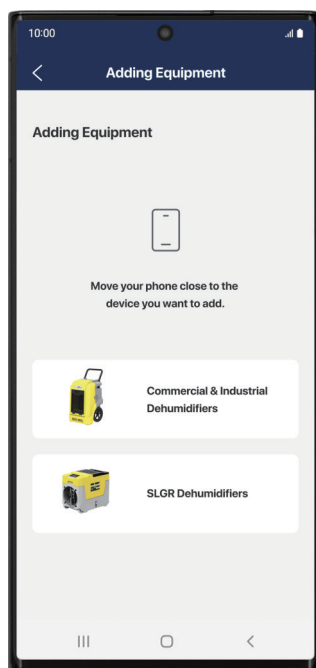
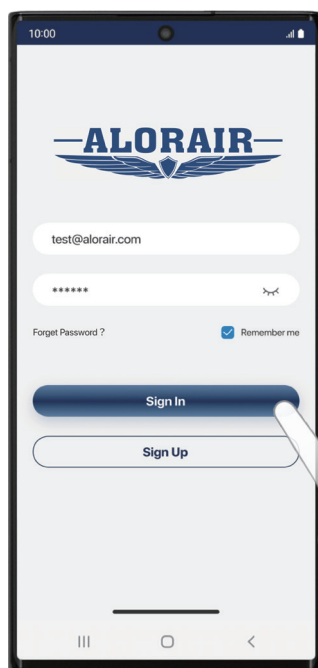


Download and install [AlorAir-R](#) from the App Store or Google Play Store.



How It Works?

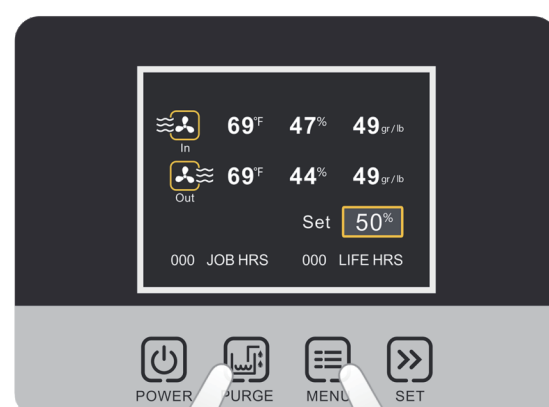
- 1 Sign up and login your account.
- 2 Find your dehumidifier model.
Let's take Storm SLGR 1250X as an example.
- 3 Follow the steps on the App to Switch the Hotspot to OFF.



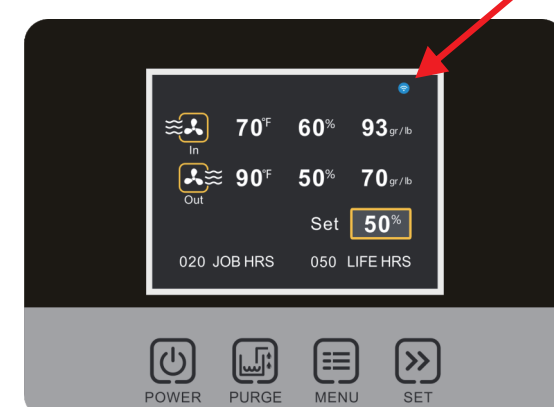
- 4 Follow these App steps to activate your device.



Press and hold 'PURGE' and 'MENU' together for 3-5 seconds.

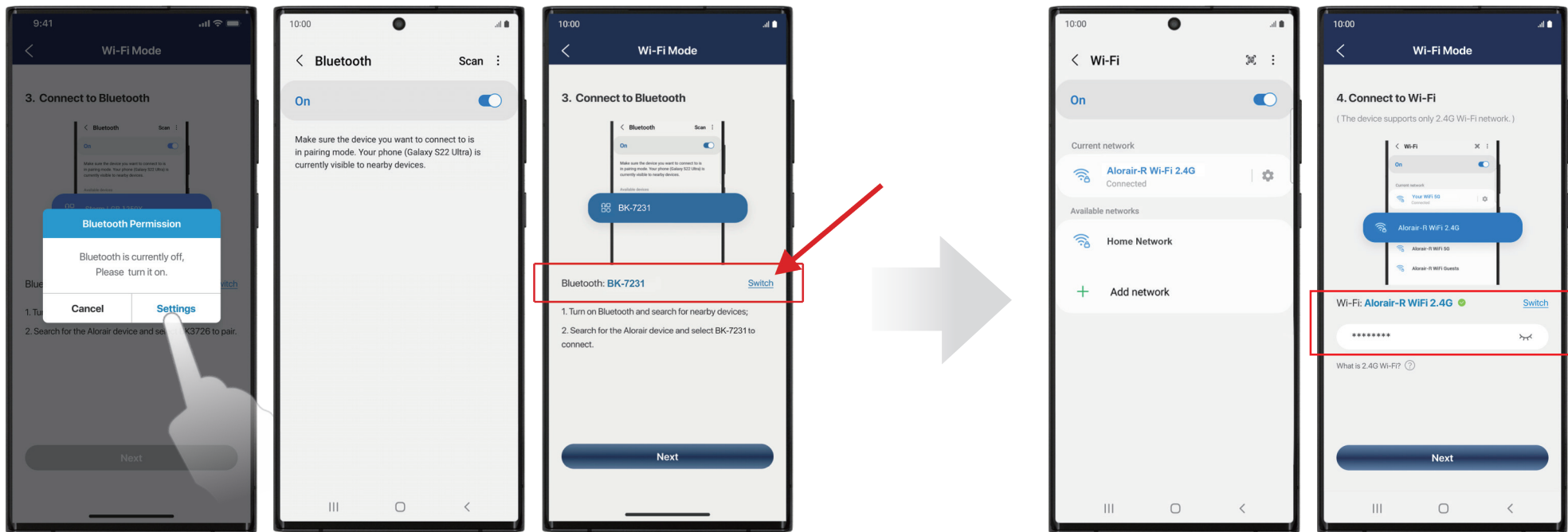


After the system beeps, the Wi-Fi icon will start flashing.



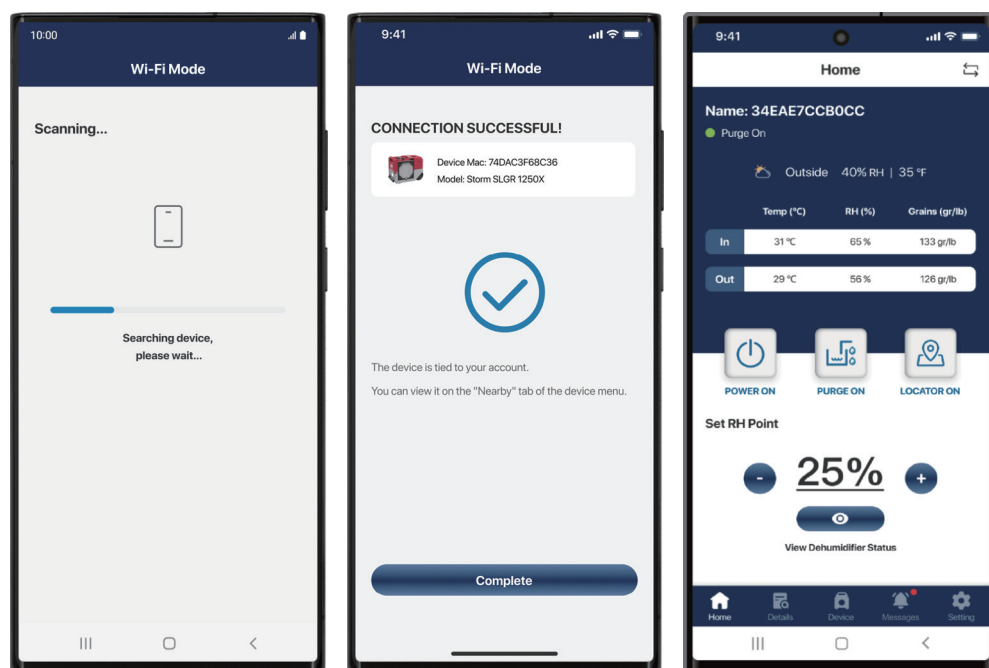
5 Turn on your phone's Bluetooth, return to the app, tap the SWITCH button and select the Bluetooth name (BK-7231) to connect.

6 Connect to the home Wi-Fi.
Wrong password will cause subsequent connection failure.



✓ CONNECTION SUCCESSFUL!

Once the app has successfully connected to the device, you can start controlling the device.

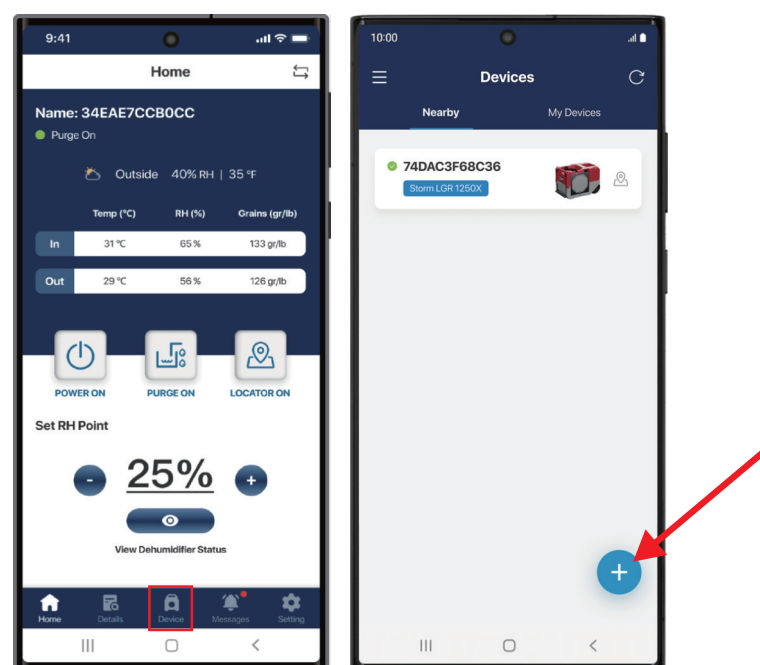
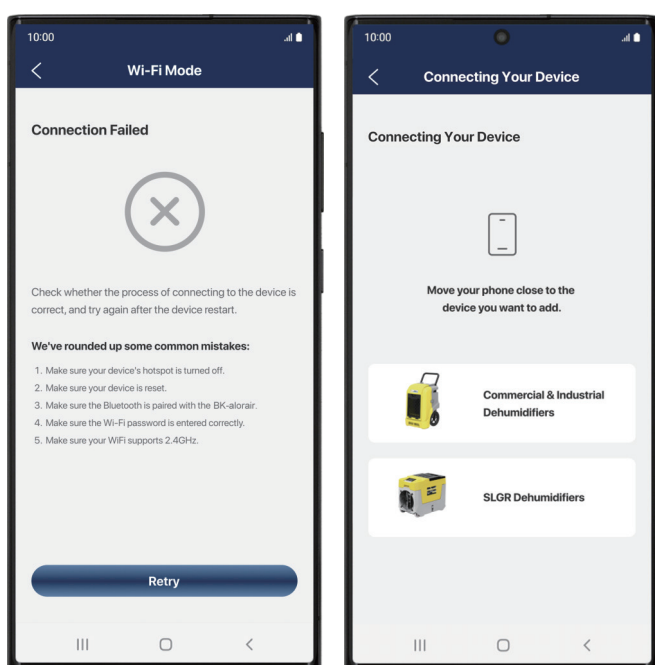


✗ Connection Failure

If connection fails, follow the app's troubleshooting prompts and restart your device before retrying.

+ Add New Device

To add a new device, navigate to the 'Device' tab and tap the '+' button.



For the best user experience, we recommend placing your Wi-Fi router close to your dehumidifier. If your Wi-Fi signal is weak, consider a router with stronger coverage. A stable signal ensures your dehumidifier runs smoothly.

